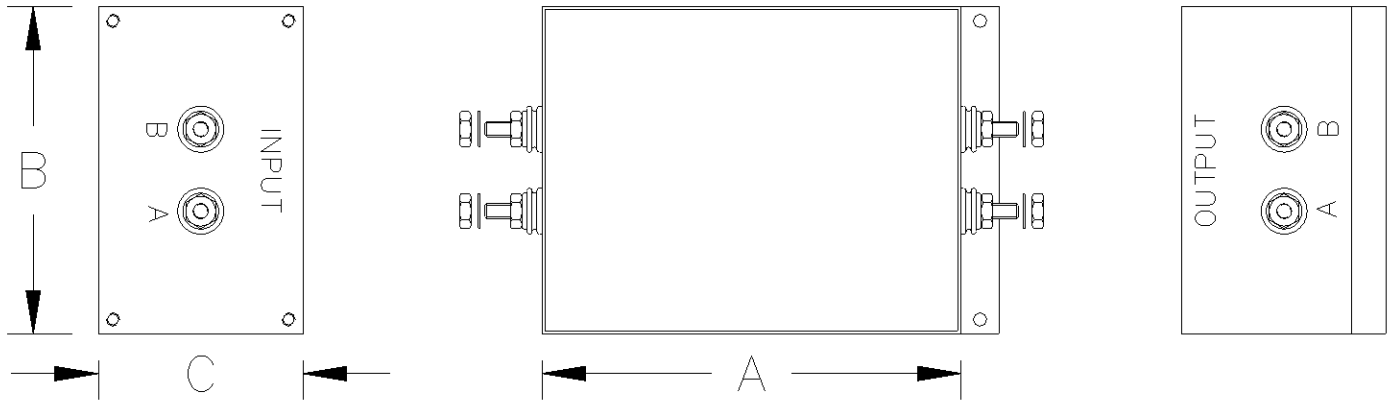


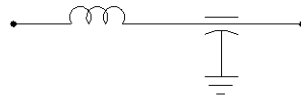
## EMI Filters 125/250 VAC Single Phase



### Specifications

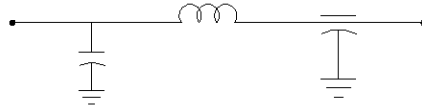
<ul style="list-style-type: none"> <li>◆ Voltage Rating</li> <li>◆ Visual/Mechanical</li> <li>◆ Insulation Resistance</li> <li>◆ DWV</li> <li>◆ Insertion Loss</li> <li>◆ Voltage Drop</li> <li>◆ Terminal Strength</li> <li>◆ Operating Temperature</li> <li>◆ Storage Temperature</li> <li>◆ Threaded Terminals</li> <li>◆ Threaded Inserts</li> <li>◆ Bracket Mounting Holes</li> <li>◆ Chassis &amp; Terminal Finish</li> <li>◆ Chassis Material</li> </ul>	<p>125/250 VAC @ 50/60 Hz and 400 Hz Per MIL-PRF-15733, paragraph 4.6.1 1500 MΩ minimum per MIL-STD-202, Method 302 1000 VDC line-to-line &amp; line-to-chassis per MIL-STD-202, Method 301 Per MIL-STD 220 Less than 1% of rated voltage per paragraph 4.6.8 of MIL-PRF-15733 Per MIL-STD-202, Method 211 -55° C to +71° C -55° C to +105° C 10-32UNF-2A 10-32UNF-2B 0.203" Diameter Electro Tin-Lead CRS</p>
---	--

### Single L



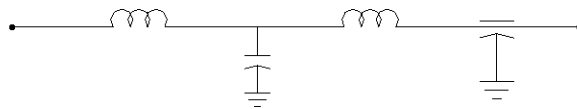
Captor Part Number	Current Rating Amps	A	B	C	Insertion Loss Curve
A-8980	1	3.00	2.50	1.50	Fig. 1
A-8981	5	3.50	2.50	1.50	Fig. 1
A-8982	10	4.00	2.50	2.00	Fig. 1
A-8983	15	4.50	3.00	2.50	Fig. 1
A-8984	25	4.50	3.50	2.50	Fig. 1

### Single $\pi$



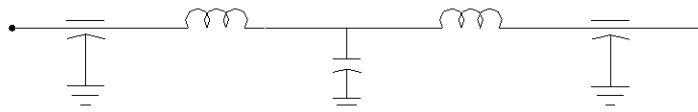
Captor Part Number	Current Rating Amps	A	B	C	Insertion Loss Curve
A-8985	1	3.50	2.50	1.50	Fig. 2
A-8986	5	4.00	2.50	1.50	Fig. 2
A-8987	10	4.50	2.50	2.00	Fig. 2
A-8988	15	5.00	3.00	2.50	Fig. 2
A-8989	25	5.00	3.50	2.50	Fig. 2

### Double L



Captor Part Number	Current Rating Amps	A	B	C	Insertion Loss Curve
A-8990	1	4.00	2.50	1.50	Fig. 3
A-8991	5	4.50	3.00	2.00	Fig. 3
A-8992	10	5.00	3.50	2.25	Fig. 3
A-8993	15	6.75	3.50	2.50	Fig. 3
A-8994	25	6.75	4.00	2.50	Fig. 3

### Double $\pi$



Captor Part Number	Current Rating Amps	A	B	C	Insertion Loss Curve
A-8995	1	5.00	2.50	2.00	Fig. 4
A-8996	5	5.50	3.50	2.00	Fig. 4
A-8997	10	6.00	4.00	2.50	Fig. 4
A-8998	15	6.00	4.75	2.50	Fig. 4
A-8999	25	6.00	5.25	2.50	Fig. 4

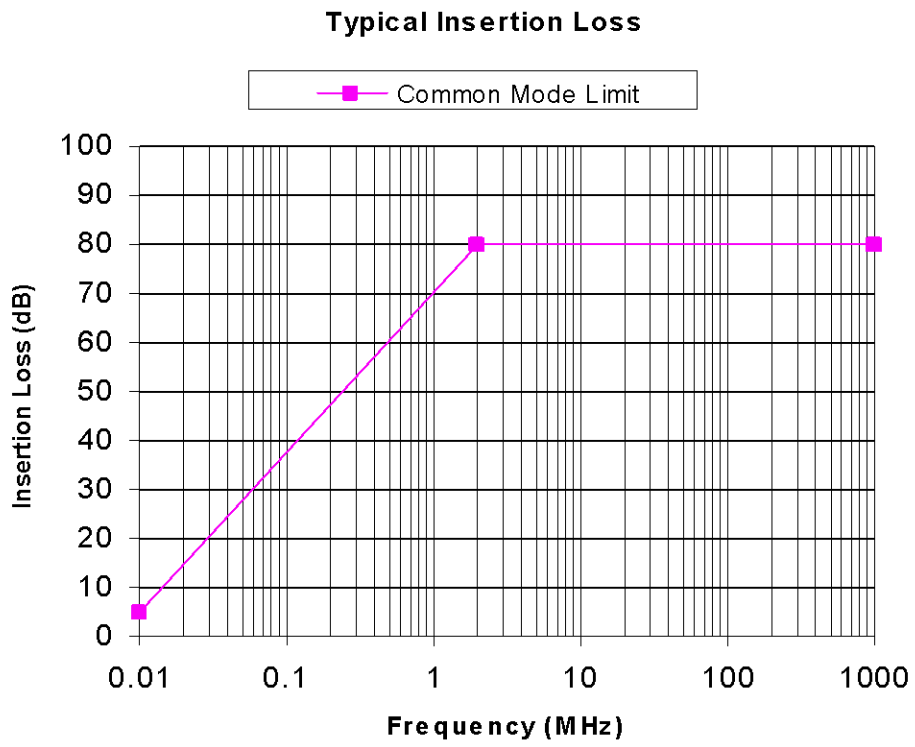


Figure 1

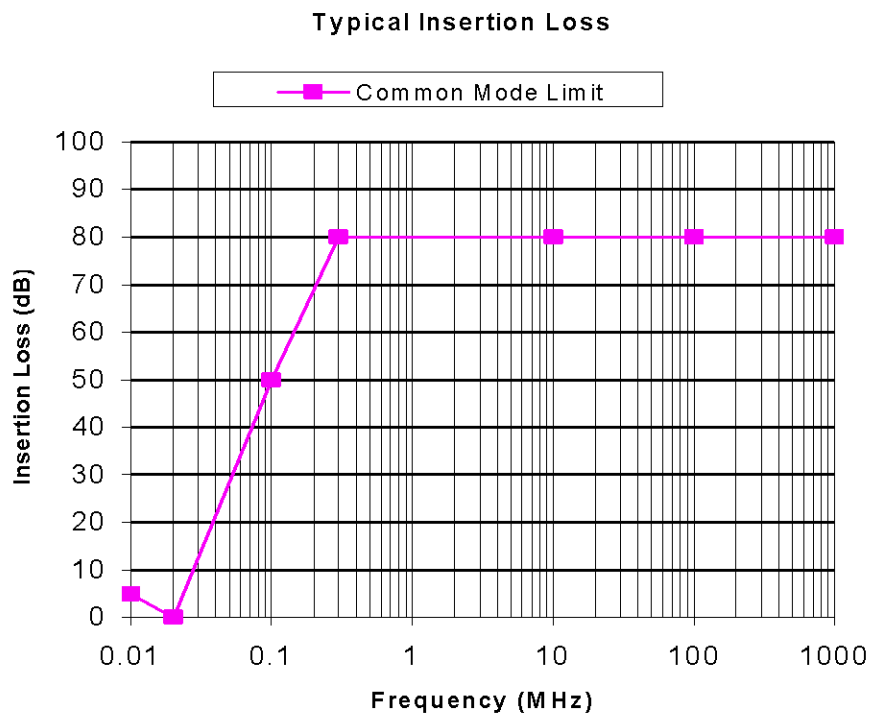


Figure 2

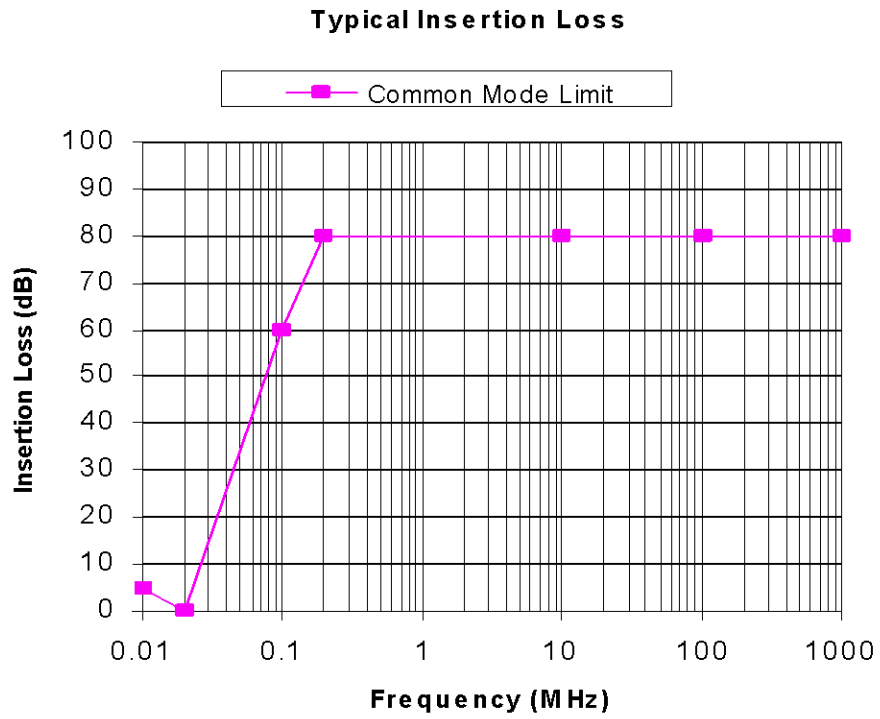


Figure 3

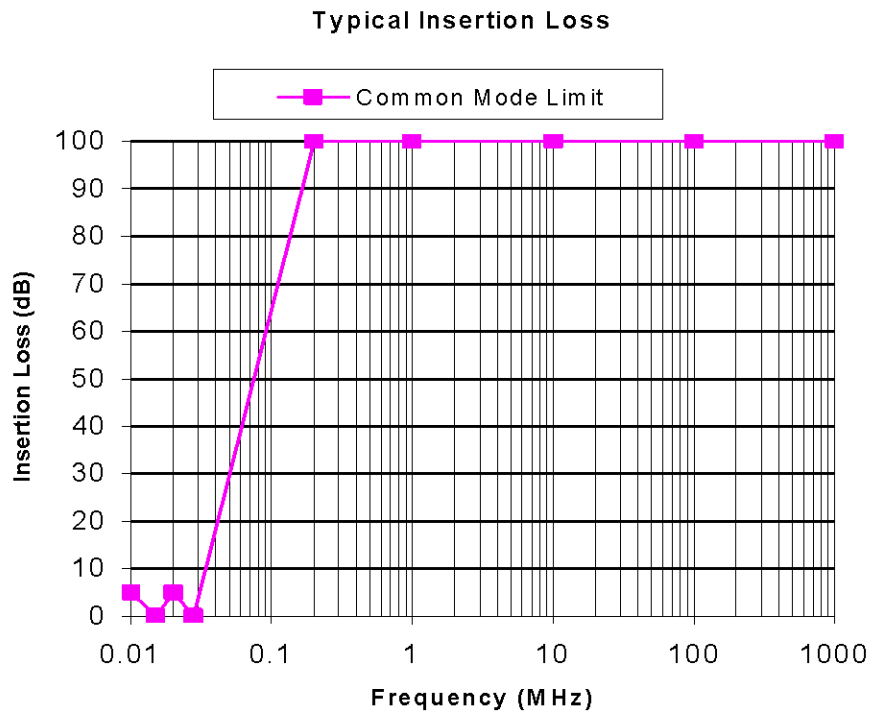


Figure 4